

Land For Sale

18401 Convention Center Dr, Tinley Park, IL
SEC 183RD & Convention Center Dr



1.97 Acre Parcel of Land in Tinley Park

- Signalized intersection, just off high traffic intersection of Harlem & 183rd
- Quarter mile from I-80 offramp
- Desirable B-3 zoning (General Business & Commercial)
- Nearby businesses include L.A. Fitness, the Tinley Park Convention Center, numerous hotels and restaurants, and several small office buildings
- Asking price \$634,500

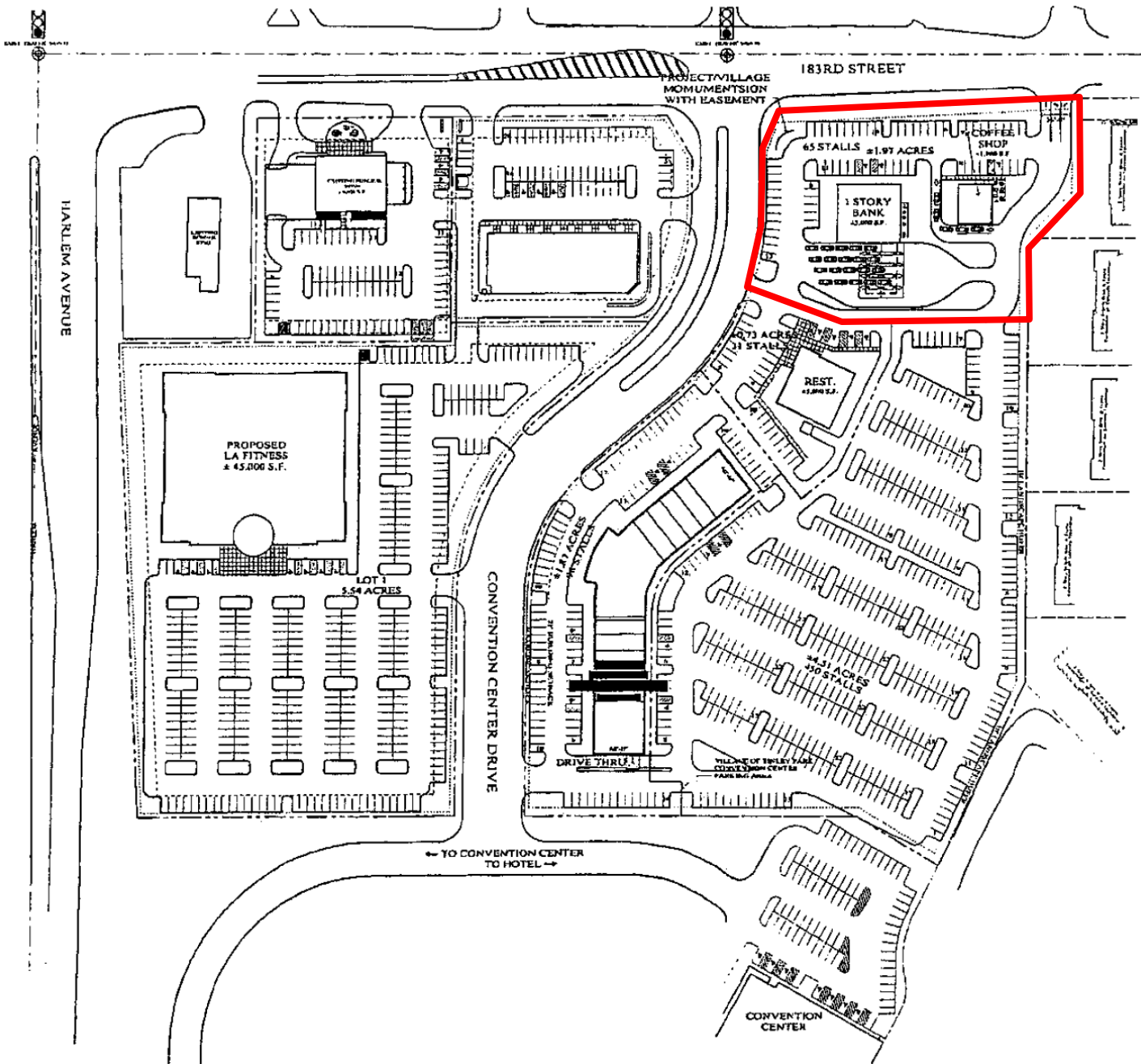
	<u>1 mi</u>	<u>3 mi</u>	<u>5 mi</u>	<u>7 mi</u>
Population	5,208	66,626	184,226	337,585
Avg HH Income	\$69,927	\$83,905	\$84,223	\$86,350
Med HH Income	\$54,123	\$74,982	\$75,375	\$75,207



KB Real Estate
790 W Frontage Rd
Ste 315
Northfield, IL 60093

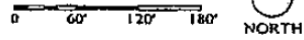
Rich Kahan
(847) 441-4425
rkahan@kbrealestate.com

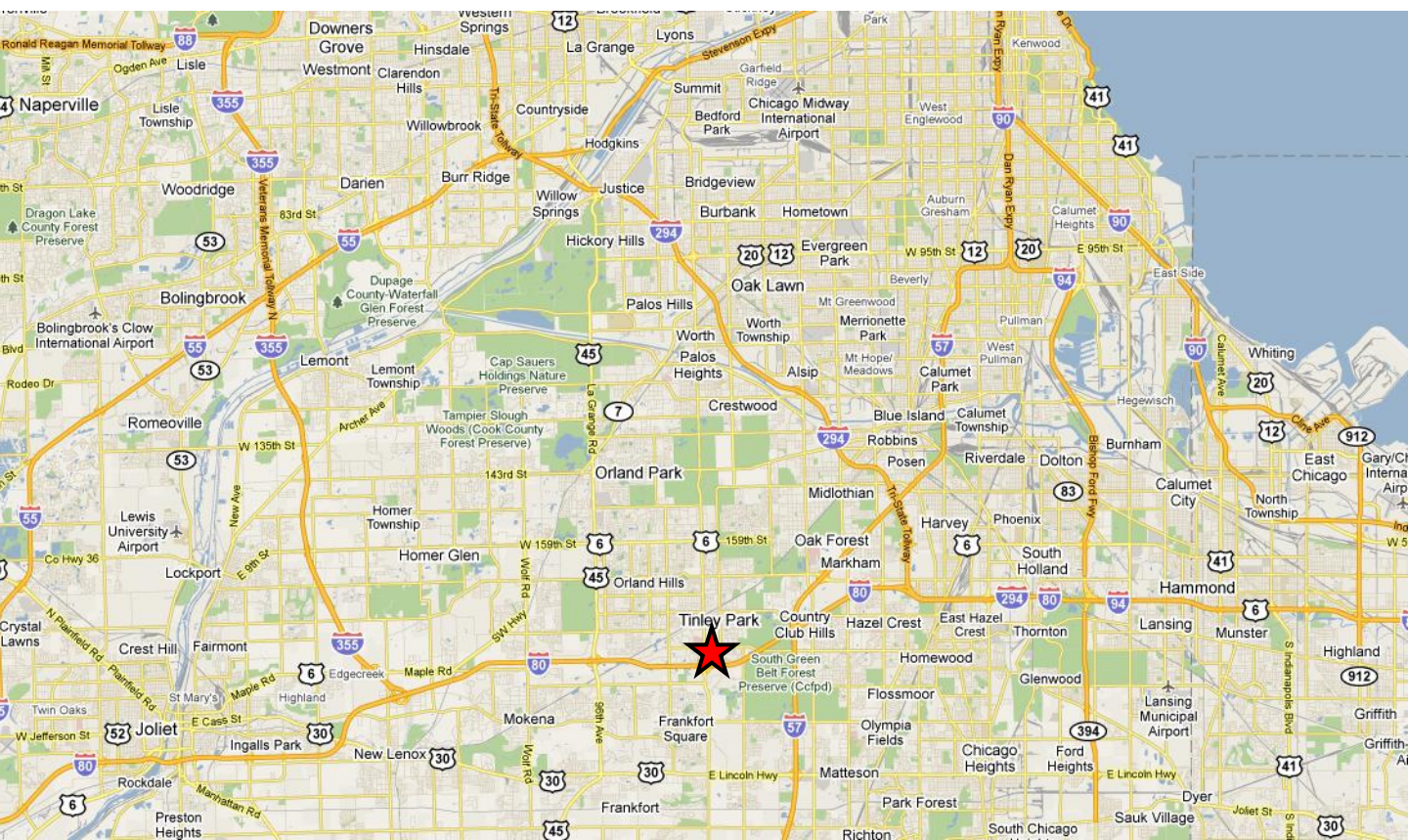
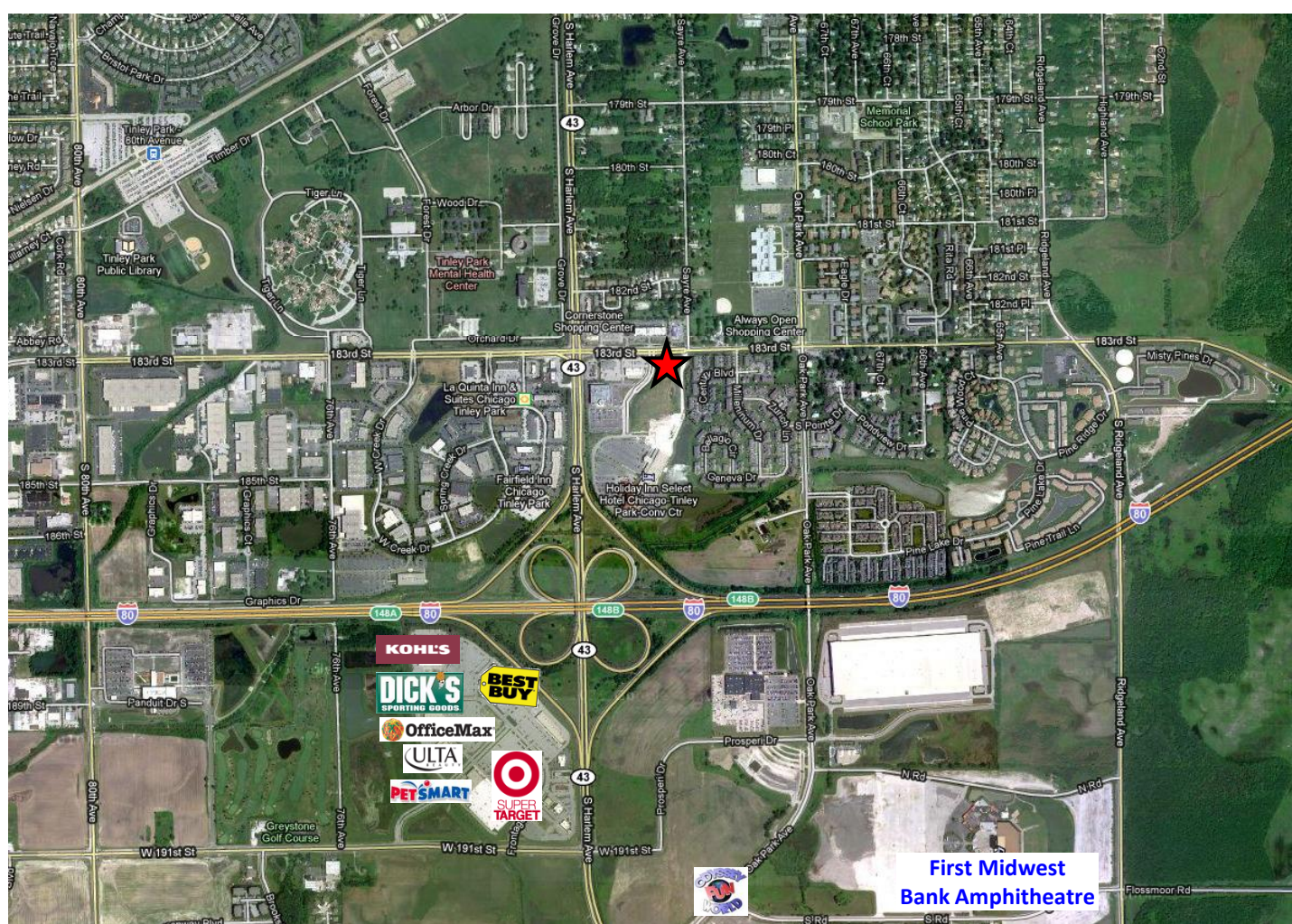
Tony Kahan
(847) 441-4424
tkahan@kbrealestate.com



PROPOSED SITE PLAN

SCALE: 1" = 60'-0"





SUMMARY PROFILE

2000-2010 Census, 2011 Estimates with 2016 Projections

Calculated using Proportional Block Groups

Lat/Lon: 41.5583/-87.7895

RS1

Convention Center Dr

Tinley Park, IL 60477

1 mi radius 3 mi radius 5 mi radius 7 mi radius

	1 mi radius	3 mi radius	5 mi radius	7 mi radius	
POPULATION	2011 Estimated Population	5,208	66,626	184,226	337,585
	2016 Projected Population	4,919	64,296	178,028	325,847
	2000 Census Population	5,129	58,852	168,191	312,254
	1990 Census Population	4,716	46,259	138,897	268,180
	Projected Annual Growth 2011 to 2016	-1.1%	-0.7%	-0.7%	-0.7%
	Historical Annual Growth 1990 to 2011	0.5%	2.1%	1.6%	1.2%
	2011 Median Age	34.6	34.1	33.6	33.5
HOUSEHOLDS	2011 Estimated Households	2,372	25,040	67,927	124,017
	2016 Projected Households	2,299	24,881	67,602	123,189
	2000 Census Households	2,071	20,811	58,742	109,807
	1990 Census Households	1,429	15,455	45,805	89,758
	Projected Annual Growth 2011 to 2016	-0.6%	-0.1%	-0.1%	-0.1%
	Historical Annual Growth 1990 to 2011	3.1%	3.0%	2.3%	1.8%
RACE AND ETHNICITY	2011 Estimated White	82.1%	80.7%	70.9%	67.2%
	2011 Estimated Black or African American	11.6%	12.2%	21.9%	25.5%
	2011 Estimated Asian or Pacific Islander	3.1%	3.5%	3.3%	2.8%
	2011 Estimated American Indian or Native Alaskan	0.1%	-	-	-
	2011 Estimated Other Races	1.5%	1.7%	1.8%	2.2%
	2011 Estimated Hispanic	6.3%	7.5%	7.7%	8.3%
INCOME	2011 Estimated Average Household Income	\$69,927	\$83,905	\$84,223	\$86,350
	2011 Estimated Median Household Income	\$54,123	\$74,982	\$75,375	\$75,207
	2011 Estimated Per Capita Income	\$31,912	\$31,609	\$31,254	\$32,083
EDUCATION (AGE 25+)	2011 Estimated Elementary (Grade Level 0 to 8)	3.7%	2.7%	2.7%	2.9%
	2011 Estimated Some High School (Grade Level 9 to 11)	8.5%	4.4%	4.3%	4.8%
	2011 Estimated High School Graduate	34.0%	31.9%	30.1%	28.7%
	2011 Estimated Some College	18.6%	21.0%	22.1%	22.2%
	2011 Estimated Associates Degree Only	9.4%	9.5%	9.0%	9.0%
	2011 Estimated Bachelors Degree Only	16.5%	19.6%	20.2%	20.4%
	2011 Estimated Graduate Degree	9.3%	10.8%	11.6%	11.9%
BUSINESS	2011 Estimated Total Businesses	165	2,032	5,408	11,210
	2011 Estimated Total Employees	1,903	24,713	65,347	130,315
	2011 Estimated Employee Population per Business	11.5	12.2	12.1	11.6
	2011 Estimated Residential Population per Business	31.5	32.8	34.1	30.1

This report was produced using data from private and government sources deemed to be reliable. The information herein is provided without representation or warranty.